

Report of_[x1]: Head of Community Housing and Community Development

To_[x2]: City Executive Board

Date: 11 June 2008

Item No_[EM3]:

Title of Report _[x4]: Expansion of Summer Holiday Activities for Young People



Purpose of report_[x5]: To summarise the additional provision of holiday activities for young people using additional funds provided for in the 2008-09 budget.



Key decision_[x6]: Yes



Portfolio Holder_[x7]: Councillor Antonia Bance

Report Approved by:



Legal: Jeremy Thomas

Finance: Andy Collett

Policy Framework_[x8]: Reduce crime and anti-social behaviour



Recommendation(s)_[x9]:



1. To agree the expansion of summer holiday activities for young people to East Oxford, Cowley Marsh and areas that have been identified as needing additional youth support to reduce anti-social behaviour, and that the report be referred for information to the relevant Area Committees.



Introduction

- 1.1 In 2005 Oxford Safer Communities Partnership identified the need to produce a plan of summer activities for 2006-07 for vulnerable young people in the most deprived areas of Oxford to assist in reducing anti-social behaviour and criminal damage.
- 1.2 In 2005 these areas were identified as Barton, Blackbird Leys, Rose Hill and Wood Farm (Appendix 1), through the Child Poverty Index, a sub-category of the Index of Multiple Deprivation.
- 1.3 In March 2006, Oxford City Council awarded a three year funding programme of £90,000 in 2006-07, £120,000 in 2007-08 and £120,000 in 2008-09 to provide holiday activities for the four areas identified.
- 1.4 Area-based multi-activity sessions, tailored to the needs of the young people commenced in summer 2006.

Purpose of the activities

2.1 The initiative was required to:

- Provide activities for four weeks during summer holidays weeks, and one week at Easter and Christmas.
- Provide separate activities for the 5-8, 9-12 and 13-19 age ranges.
- Operate for at least 5 hours per day, 5 days per week.
- Customise its activities to the needs of the young people.
- Include support sessions
- Involved the local community in the delivering the service.
- Effectively publicise the activities on offer using timely and accurate material.
- Work with existing service providers in the area

2.2 The general consensus from the young people who attended was extremely favourable. Below are a few quotes from some of the attendees and parents.

- Parent: "This scheme is very good. It keeps the kids off the streets over the school holiday. Thanks to all of you for doing this"
- Parent: "The scheme is a big relief as it keeps the children away from harmful and dangerous activities. It realises their potential"
- Young Person on what new skills they learnt: "I learned to control the bass and how to play cricket better"
- Young Person on what they would like to see next time: "Newer things and better things in the arts and crafts room".

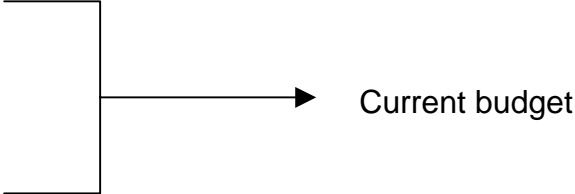

Current position

- 3.1 The holiday activity scheme is now in the base budget, costing £120,000 per annum. The Active Communities Partnership Manager in the Community Safety Team manages the budget.
- 3.2 In February 2008 Council agreed to increase the budget for 2008-09 onwards by £30,000. The annual base budget is now £156,500.

3.3 Bids from service providers for 2008-09 activities totalled £160,989.

3.4 The Child Poverty Index (CPI) data has been updated and Oxford has been mapped using the latest data (Appendix 2) and has identified additional areas of East Oxford and Cowley Marsh as having significant levels of Child Poverty.

3.5 It is proposed that the budget fund services in the areas below:

- Barton
 - Blackbird Leys
 - Rose Hill
 - Wood Farm
- 
- Cowley Marsh
 - East Oxford
- 

3.6 Additional areas that fall outside the eligibility criteria, but are recognised as needing additional activities for young people by the local Neighbourhood Policing Teams may be offered financial support depending on resources.

Recommendation(s)^[x10]:

- 1. To agree the expansion of summer holiday activities for young people to East Oxford, Cowley Marsh and areas that have been identified as needing additional youth support to reduce anti-social behaviour, and that the report be referred for information to the relevant Area Committees.**



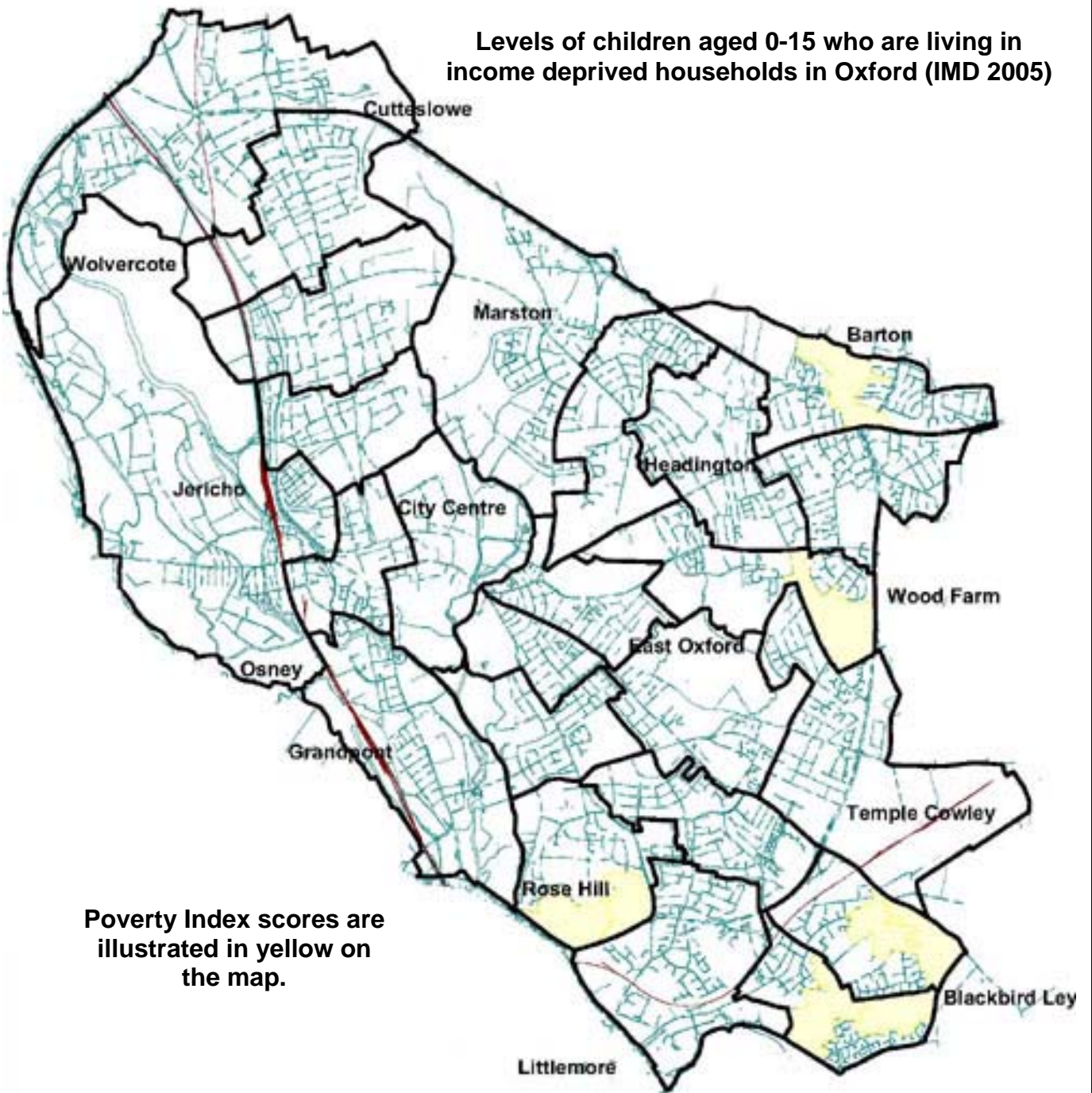
Report Author: Neil Holman
Tel: (01865) 467329

Background papers:

- 1. Appendix 1 – Map highlighting levels of children aged 0-15 who are living in income deprived households in Oxford (IMD 2005)**
- 2. Appendix 2 - Map highlighting levels of children aged 0-15 who are living in income deprived households in Oxford (IMD 2007)**

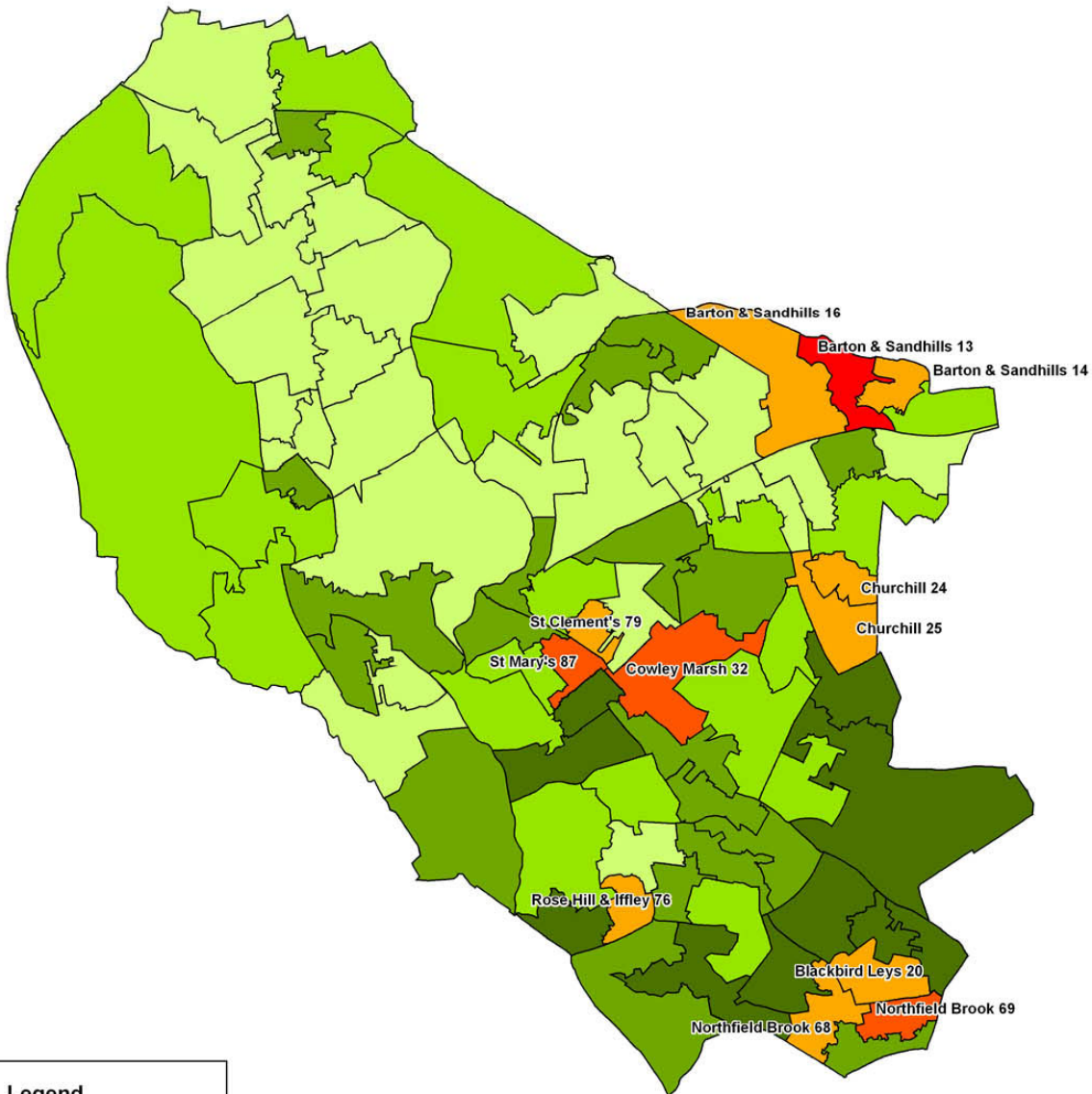
Appendix 1

Levels of children aged 0-15 who are living in income deprived households in Oxford (IMD 2005)



Appendix 2

Levels of children aged 0-15 who are living in income deprived households in Oxford (IMD 2007)



Legend

Superoutput areas

IDACI

- Upto 10%
- 11% - 20%
- 21% - 30%
- 31% - 40%
- 41% - 50%
- 51% - 60%
- 61% - 70%